



Special Features

- Cost effective
- Sleek design
- Dry & fillable version
- Standard followed in general EN 837-1
- Two piece construction (Case is assembled with socket and adaptor)

Application

- Suitable for clean air & gaseous or liquid media that will not obstruct the pressure system
- HVAC

Specifications

Standard Version : 100 mm (Internal system i.e., bourdon tube and Movement of NS 63 mm.)

| | | |
|--------------------------|---|---|
| Accuracy | : | ±1.6% of F. S. |
| Ambient temperature | : | - 20°C to + 65°C |
| Process temperature | : | Max. 180°C |
| Operating pressure range | : | 75% of Scale Value |
| Over pressure limit | : | ≤ 100 bar : 125% of Max. Scale Value |
| | : | > 100 to ≤ 600 bar : 115% of Max. Scale Value |

| | | |
|--------------|---|----------------------------|
| Case & Bezel | : | AISI 304 SS (Bayonet Type) |
| Bourdon | : | AISI 316L SS |
| Socket | : | AISI 316 SS |
| Movement | : | AISI 304 SS |
| Joints | : | TIG Welding |

| | | |
|--------------|---|---|
| Protection | : | IP 65 |
| Dial | : | Aluminum, black graduation on white background |
| Pointer | : | Aluminum, black coloured, slotted Zero adjustable |
| Window | : | Sheet Glass |
| Filling Plug | : | Nitrile |
| Gasket | : | Neoprene for Bayonet type & Silicon rubber for rolling type |

Dry but fillable version (option FG)

| | | |
|---------------------------|---|---|
| Fillable Dampening Liquid | : | Glycerine 99.7% (Option - FG) |
| Process Temperature | : | Maximum 65°C |
| Window | : | Plexi Glass |
| Other Features | : | Refer Specification of Standard Version |

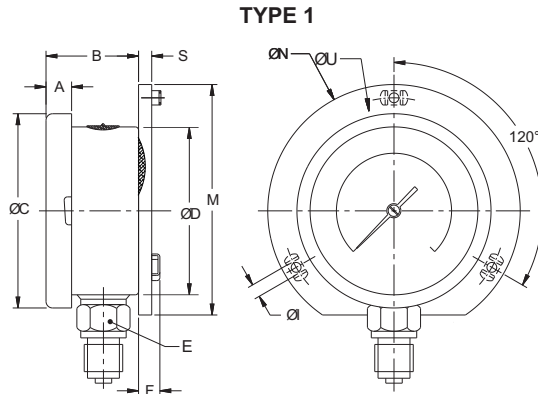
Glycerine filled version (option PY)

| | | |
|---------------------|---|--|
| Accuracy | : | ±1.6% of F. S. |
| Ambient Temperature | : | Maximum 65°C |
| Process Temperature | : | Maximum 65°C |
| Window | : | Plexi Glass |
| Dampening Liquids | : | Glycerine 99.7% (others available as option) |
| Other Features | : | Refer Specification of Standard Version |

Temperature effect:

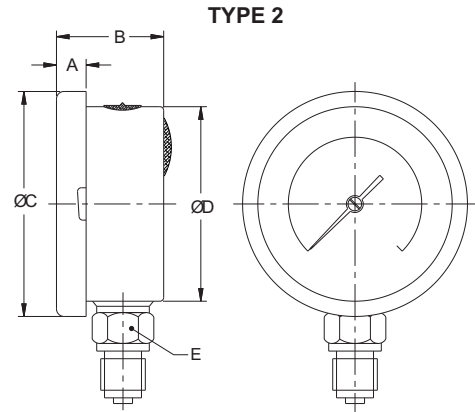
The variation of indication caused by effects of temperature is to be calculated by below formula; which is to be added in the specified accuracy while measurement :- Formula : $\pm 0.04 \times (t_2 - t_1) \% \text{ of F. S.}$ where t_1 = reference temperature (+20°C) and t_2 = ambient temperature in °C.

Dimensions - standard version



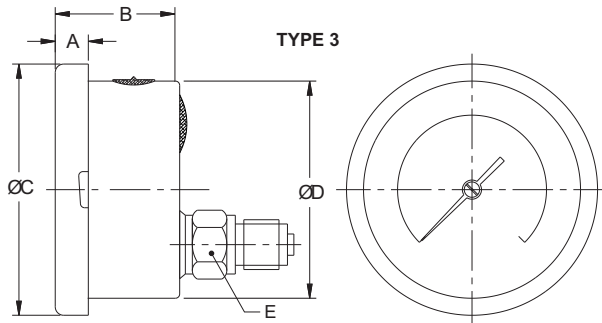
BAYONET TYPE (STANDARD)

| NS | A | B | ØD | ØC | E | M | S | F | ØI | ØN | ØU | Weight in gram (With Box) |
|-----|------|----|-----|-----|--------|-----|---|------|----|-----|-----|------------------------------|
| 100 | 12.5 | 39 | 100 | 110 | A/F 17 | 128 | 6 | 14.5 | 6 | 134 | 118 | 530.0 |



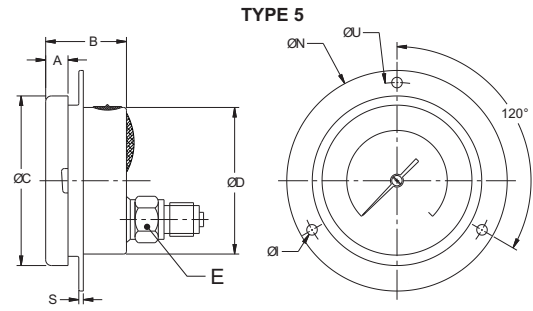
BAYONET TYPE (STANDARD)

| NS | A | B | ØD | ØC | E | Weight in gram (With Box) |
|-----|------|----|-----|-----|--------|------------------------------|
| 100 | 12.5 | 39 | 100 | 110 | A/F 17 | 420.0 |



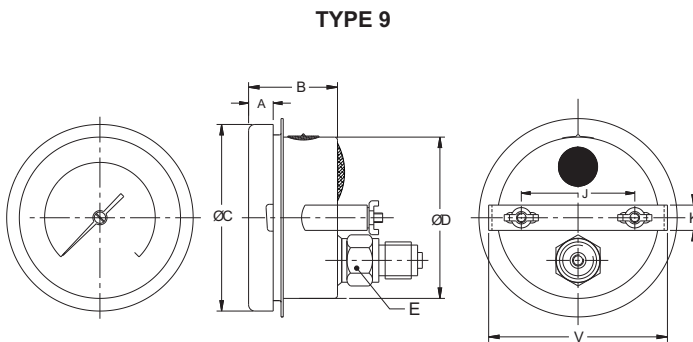
BAYONET TYPE (STANDARD)

| NS | A | B | ØD | ØC | E | Weight in gram (With Box) |
|-----|------|----|-----|-----|--------|------------------------------|
| 100 | 12.5 | 39 | 100 | 110 | A/F 17 | 440.0 |



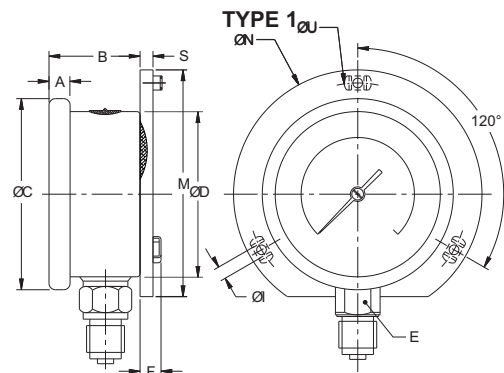
BAYONET TYPE (STANDARD)

| NS | A | B | ØD | ØC | E | S | F | ØI | ØN | ØU | Weight in gram (With Box) |
|-----|------|----|-----|-----|--------|---|------|----|-----|-----|------------------------------|
| 100 | 12.5 | 39 | 100 | 110 | A/F 17 | 6 | 14.5 | 6 | 134 | 118 | 510.0 |



BAYONET TYPE (STANDARD)

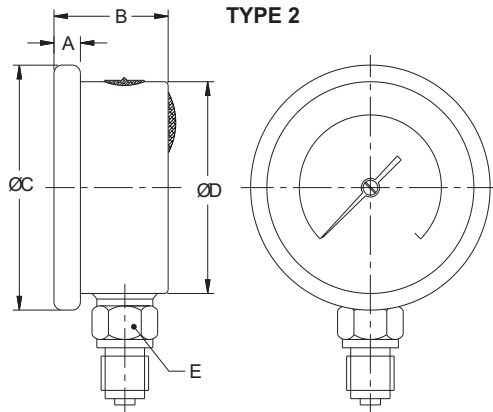
| NS | A | B | ØD | ØC | E | J | K | V | Weight in gram (With Box) |
|-----|------|----|-----|-----|--------|------|----|-----|------------------------------|
| 100 | 12.5 | 39 | 100 | 110 | A/F 17 | 66.5 | 16 | 106 | 550.0 |



ROLLING TYPE (OPTION)

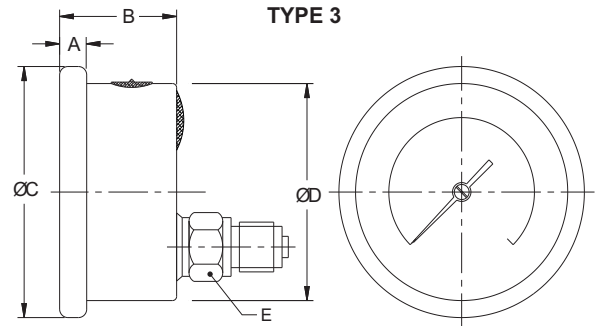
| NS | A | B | ØD | ØC | E | S | F | ØI | ØN | ØU | Weight in gram (With Box) |
|-----|------|----|-----|-----|--------|---|------|----|-----|-----|------------------------------|
| 100 | 12.5 | 39 | 100 | 110 | A/F 17 | 6 | 14.5 | 6 | 134 | 118 | 495.0 |

Dimensions - standard version



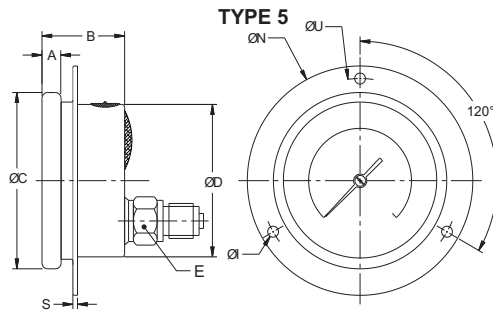
ROLLING TYPE (OPTION)

| NS | A | B | ØD | ØC | E | Weight in gram (With Box) |
|-----|---|------|-----|-----|--------|------------------------------|
| 100 | 7 | 35.5 | 100 | 110 | A/F 17 | 405.0 |



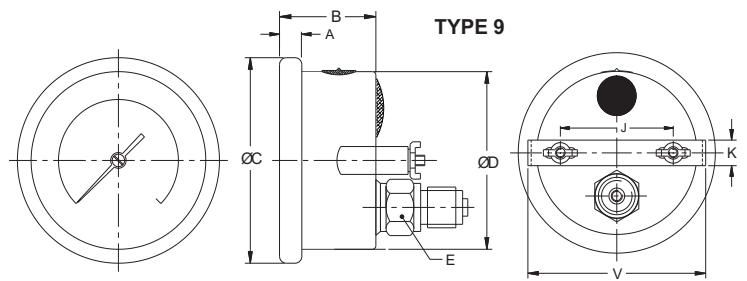
ROLLING TYPE (OPTION)

| NS | A | B | ØD | ØC | E | Weight in gram (With Box) |
|-----|---|------|-----|-----|--------|------------------------------|
| 100 | 7 | 35.5 | 100 | 110 | A/F 17 | 410.0 |



ROLLING TYPE (OPTION)

| NS | A | B | ØD | ØC | E | S | ØI | ØN | ØU | Weight in gram (With Box) |
|-----|---|------|-----|-----|--------|---|----|-----|-----|------------------------------|
| 100 | 7 | 35.5 | 100 | 110 | A/F 17 | 1 | 6 | 134 | 118 | 490.0 |



ROLLING TYPE (OPTION)

| NS | A | B | ØD | ØC | E | J | K | V | Weight in gram (With Box) |
|-----|---|------|-----|-----|--------|------|----|-----|------------------------------|
| 100 | 7 | 35.5 | 100 | 110 | A/F 17 | 66.5 | 16 | 106 | 500.0 |

Range Table

Note : We offer Pressure, Vacuum and Compound ranges in Scales like kPa, MPa, bar, psi, kg/cm² & Dual Scale like kPa with psi, kPa with bar, bar with psi or scales as per the requirement can be provided on request. Following are the example tables for kg/cm² & psi scales

Pressure Range

Single scale with kg/cm²

| | | | | |
|-------|------|------|-------|-------|
| 0/1 | 0/4 | 0/16 | 0/60 | 0/250 |
| 0/1.6 | 0/6 | 0/25 | 0/100 | 0/400 |
| 0/2.5 | 0/10 | 0/40 | 0/160 | |

Dual scale (psi with kg/cm²)

| psi | kg/cm ² | psi | kg/cm ² | psi | kg/cm ² |
|-------|--------------------|--------|--------------------|--------|--------------------|
| 0/15 | 1 | 0/300 | 20 | 0/2200 | 160 |
| 0/30 | 2 | 0/400 | 28 | 0/3000 | 200 |
| 0/60 | 4 | 0/500 | 35 | 0/4000 | 280 |
| 0/100 | 7 | 0/600 | 40 | 0/5000 | 350 |
| 0/150 | 10 | 0/1000 | 70 | 0/6000 | 400 |
| 0/220 | 16 | 0/1500 | 100 | | |

Range Table
Vacuum & Compound Range
Dual scale

| inHg with psi | mmHg with kg/cm ² | inHg with psi | mmHg with kg/cm ² | inHg with psi | mmHg with kg/cm ² |
|---------------|------------------------------|---------------|------------------------------|---------------|------------------------------|
| - 30/0 | - 760 / 0 | - 30/60 | - 760 / 3 | - 30/200 | - 760 / 15 |
| - 30/15 | - 760 / 1 | - 30/100 | - 760 / 6 | - 30/300 | - 760 / 20 |
| - 30/30 | - 760 / 2 | - 30/150 | - 760 / 9 | - 30/350 | - 760 / 24 |

Single scale kg/cm²

| | | | |
|---------|---------|-------|--------|
| - 1/0 | - 1/1.5 | - 1/5 | - 1/15 |
| - 1/0.6 | - 1/3 | - 1/9 | - 1/24 |

Ammonia scales (with temperature scale)

| Range (kg/cm ²) | Range (psi) |
|------------------------------|---------------|
| -1 to 12.5 | -30 - 150 |
| -1 to 16 | -30 - 300 |
| -1 to 25 | 0 - 300 |

Accessories (Refer Datasheet for complete specifications)

| | | |
|-------------------------|---|-------------------|
| EB Cooling tower | ED Over load protector (gauge saver)** | EG Snubber |
| EC Gauge cock | * Needle valve | EH Siphon |

* Refer catalogue for Valves & Manifolds

** For Pressure Ranges.

How To Order
Example

| | | | | |
|---|--|------------|--|-------------------------|
| Basic Model | | | | AV |
| Code | | | | |
| Nominal Size | F | | | X |
| | 100 mm | | | |
| Type of Mounting | | | | |
| 1 | Wall / surface / projection mounting with bottom entry | 5 | Flush panel back entry with front flange | X |
| 2 | Direct bottom entry | 9 | Back entry with mounting bracket | |
| 3 | Direct lower back entry | | | |
| Gauge Connection | | | | |
| 2BM | 1/4" BSP (M)* | 2NM | 1/4" NPT (M)* | XXX |
| 3BM | 3/8" BSP (M)(Standard) | 3NM | 3/8" NPT (M)* | |
| 4BM | 1/2" BSP (M)(Standard) | 4NM | 1/2" NPT (M)(Standard) | |
| | | 2TM | 1/4" BSPT (M)* | |
| | | 3TM | 3/8" BSPT (M)* | |
| | | 4TM | 1/2" BSPT (M)* | |
| * Consult factory for minimum order quantity, price & delivery. | | | | |
| Note : Connections like Metric/ PT/ PF/ Flaired/ UNF/ G/ R etc can be provided on request. | | | | |
| Range | | | | 0/10 kg/cm ² |
| Refer range table | | | | |
| Options | | | | |
| PY | Dampening liquid glycerine filled | FG | Fillable liquid glycerine | XX |
| PW | Five point calibration certificate | ZD | Ammonia range (with temperature scale) | |
| RH | Custom designed dial | SQ | Case with rolling type bezel | |
| SG | Oxygen service (for dry version) | QB | Integral dampening screw (AISI 316 SS) | |
| SX | SS tag plate | RW | Plexi glass | |
| | | | | |

Ordering Example: AV . X . X . XX . XXX . 0/10kg/cm². XX

For other optional items, please contact factory for delivery and minimum quantity of order.

 Note : specifications and dimensions given in this product catalogue represents the state of engineering at the time of printing.
 Modifications may take place and materials specified may be replaced by others without prior notice.